



DIGITAL PHOTOGRAPHY

Residents use digital cameras, a lap-top computer and a printer to create a local exhibition.

Needs: Trainer/support worker. Simple photo re-sizing software; easy-to-use display medium e.g. PhotoJam.

Y1



GROUPS ONLINE

Funding, services and support provided to help community groups and voluntary organisations get online

Needs: online services, support programme, events.

Y2



LEARNING MATERIALS

Develop and pilot new e-learning materials for special groups (minority languages, special needs)

Needs: know-how, partners

Y3

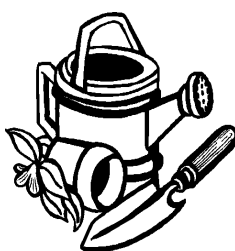


NEWSLETTER

Funding and support provided for a community newsletter group, including electronic version.

Needs: tutor, interested residents, support with writing and production.

Y4



COMMUNITY GARDENING

A community garden design project turns a derelict site into allotments, using computer-aided design.

Needs: ICT design tutor, Internet research support, fundraising tutor.

Y5



COMMUNITY RESEARCH

Training courses to help local people use computers and the Net to research local issues for themselves and prepare action plans.

Needs: research trainers, partner input, ICT room, interested activists.

Y6



CAPACITY BUILDING

Joint programmes to build residents' and agencies' capacity to engage in participation programmes including online activities.

Needs: partners, ICT curriculum trainer

Y7



DISABILITIES SUPPORT

Special software and adapted hardware is used to improve access and support for people with disabilities

Needs: appropriate hardware, software and tutor

Y8



LEARNING EQUIPMENT

Upgrade with new learning equipment to cover special needs of users

Needs: equipment, know how

Y9

Suggested funding:

TrEACL: Funds for colleges and other LSC-funded institutions or partnerships to develop e-learning materials and programmes
INFO: administered by NIACE see www.aclearn.net/news/focus/issues/treac/

Community Fund: Lottery source for philanthropic projects in non-profits
www.community-fund.org.uk

Y3

Suggested funding:

Community Fund: Lottery source for non-profits
www.community-fund.org.uk

Vodafone Foundation
www.vodafonefoundation.org/foundation.htm

Barclays Rural Regeneration fund. For agricultural areas.
Information from DirectSupport or angie.tymkow@barclays.co.uk

Y2

Suggested funding:

Community Fund: Lottery source for non-profits
INFO: www.community-fund.org.uk

Heritage Lottery Fund: Themed programmes to explore or explain local culture
www.hlf.org.uk

Arts Council Funding: Arts-based projects to involve communities in learning and self-expression
www.artscouncil.org.uk

Trusts: local, regional or theme priorities, vol/comms only
Directsupport, FunderFinder software. Ask your local CVS.

Y1

Suggested funding:

Opportunities for Volunteers: grants through national agencies, depending on target groups e.g. www.ace.org.uk or www.churches-together.org.uk/ctd or DirectSupport for advice

Lloyds/TSB: funding for charitable organisations
www.lloydstsbfoundations.org.uk

Community Learning Chests. In Neighbourhood Renewal areas
www.neighbourhood.gov.uk

Refugee Integration Unit For capacity building in refugee communities.
Eunice.Uzor@homeoffice.gsi.gov.uk

Y6

Suggested funding:

NOF Green Spaces Award is distributed through partner agencies
www.nof.org.uk

Doorstep Greens funding for design and build
www.community-fund.org.uk or www.countryside.gov.uk

Barclays New Futures funding for schools with community partners
www.barclaysnewfutures.co.uk

Y5

Suggested funding:

Opportunities for Volunteers: grants through national agencies, depending on target groups e.g. www.ace.org.uk or www.churches-together.org.uk/ctd or DirectSupport for advice

Lloyds/TSB: funding for charitable organisations
www.lloydstsbfoundations.org.uk

Community Learning Chests. In Neighbourhood Renewal areas
www.neighbourhood.gov.uk

Refugee Integration Unit For capacity building in refugee communities.
Eunice.Uzor@homeoffice.gsi.gov.uk

Y4

Suggested funding:

TACL: Funds for colleges to buy learning equipment. Administered by NIACE see www.aclearn.net/newsdesk/tac/

Futurebuilders: Funds for voluntary sector organisations to improve their capacity to deliver support services in health, care, crime prevention, learning, social support etc. ~Bids must be 80% capital, 20% revenue. Administered by Active Community Unit of the Home Office
www.hm-treasury.gov.uk

Y9

Suggested funding:

Community Fund: Lottery source for non-profits
www.community-fund.org.uk

Vodafone Foundation
www.vodafonefoundation.org/foundation.htm

Y8

Suggested funding:

Opportunities for Volunteers: grants through national agencies, depending on target groups e.g. www.ace.org.uk or www.churches-together.org.uk/ctd or DirectSupport for advice

Lloyds/TSB: funding for charitable organisations
www.lloydstsbfoundations.org.uk

Community Learning Chests. In Neighbourhood Renewal areas
www.neighbourhood.gov.uk

Refugee Integration Unit For capacity building in refugee communities.
Eunice.Uzor@homeoffice.gsi.gov.uk

Y7



FAMILY E-LEARNING

Setup a family e-learning project. Produce good practice guide and new ideas/approaches.

Needs: Trainer/support worker. Links with partners.

Y10



RESIDENTS' VIDEO

Residents make a video about life in the area for showing in community locations and official events, using professional support and equipment

Needs: tutors, professional video support.

Y11



AGEWELL PROJECT

A project worker develops learning and support groups for older residents, introducing them to new technology.

Needs: tutor/co-ordinator and specialist support organisation.

Y12



ARTS, MUSIC WORKSHOPS

Workshops offer creative learning opportunities to residents

Needs: facilitators/tutors, music related hardware/software

Y13

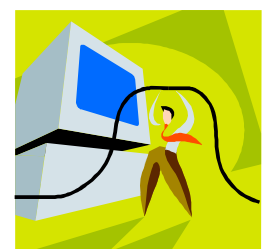


MUSEUM OUTREACH

Outreach programmes to link museums' services with black and minority ethnic groups, using the Web to introduce cultural and historical links.

Needs: museum partner, tutor/co-ordinator.

Y14



AGENCY SUPPORT

Capacity building for local agencies - ICT for information, research, communication, lobbying

Needs: partners, local groups

Y15



ESOL SUPPORT

Computer-based workshops for black and ethnic minority groups to develop written and verbal language skills

Needs: tutors

Y16



FAMILIES ONLINE

Inter-generational computer project focused on families learning and using the internet together

Needs: curricula, tutor/volunteers, equipment

Y17



LEARNING CHAMPIONS

Development and support for a team of learning champions drawn from the local community.

Needs: tutor/co-ordinator

Y18

Suggested funding:

Community Fund: Lottery source for non-profits
www.community-fund.org.uk

Lloyds/TSB: funding for charitable organisations
www.lloydstsbfoundations.org.uk

Trusts: local, regional or theme priorities, vol/comms only
 Directsupport, FunderFinder software. Ask your local CVS.

Y12**Suggested funding:**

Community Fund: Lottery source for non-profits
 INFO: www.community-fund.org.uk

Heritage Lottery Fund: Themed programmes to explore or explain local culture
www.hlf.org.uk

Arts Council Funding: Arts-based projects to involve communities in learning and self-expression
www.artscouncil.org.uk

Barclays Rural Regeneration fund. For agricultural areas.
 Information from DirectSupport or angie.tymkow@barclays.co.uk

Y11**Suggested funding:**

Opportunities for Volunteers: grants through national agencies, depending on target groups e.g. www.ace.org.uk or www.churches-together.org.uk/ctd or DirectSupport for advice

Lloyds/TSB: funding for charitable organisations
www.lloydstsbfoundations.org.uk

Community Learning Chests. In Neighbourhood Renewal areas
www.neighbourhood.gov.uk

Refugee Integration Unit For capacity building in refugee communities.
Eunice.Uzor@homeoffice.gsi.gov.uk

Y10**Suggested funding:**

Community Fund: Lottery source for non-profits
www.community-fund.org.uk

Vodafone Foundation
www.vodafonefoundation.org/foundation.htm

Barclays Rural Regeneration fund. For agricultural areas.
 Information from DirectSupport or angie.tymkow@barclays.co.uk

Y15**Suggested funding:**

Community Fund: Lottery source for non-profits
 INFO: www.community-fund.org.uk

Heritage Lottery Fund: Themed programmes to explore or explain local culture
www.hlf.org.uk

Arts Council Funding: Arts-based projects to involve communities in learning and self-expression
www.artscouncil.org.uk

Barclays Rural Regeneration fund. For agricultural areas.
 Information from DirectSupport or angie.tymkow@barclays.co.uk

Y14**Suggested funding:**

Youth Music: programmes for those up to 18, or up to 25 year olds with special needs
www.youthmusic.org.uk

Arts Council: Arts-based projects to involve communities in learning and self-expression
www.artscouncil.org.uk

PRS Foundation
www.prsf.co.uk

Y13**Suggested funding:**

Opportunities for Volunteers: grants through national agencies, depending on target groups e.g. www.ace.org.uk or www.churches-together.org.uk/ctd or DirectSupport for advice

Lloyds/TSB: funding for charitable organisations
www.lloydstsbfoundations.org.uk

Community Learning Chests. In Neighbourhood Renewal areas
www.neighbourhood.gov.uk

Refugee Integration Unit For capacity building in refugee communities.
Eunice.Uzor@homeoffice.gsi.gov.uk

Y18**Suggested funding:**

learnirect: outcome/accredited course related funding for online learning delivery.
www.ufi.com/regions and contact your local team

Your local college: Investigate funding available for online learning through outreach

Y17**Suggested funding:**

Learning and Skills Council. Enquire about the Local initiative fund, ESF fund, and programmes for Neighbourhood Learning in Deprived Communities. In NRA areas ask about Community Learning Chests. Unless you are already involved with LSC, be prepared for a closed shop.
www.lsc.gov.uk/localarms.cfm

Lloyds/TSB: funding for charitable organisations
www.lloydstsbfoundations.org.uk

Trusts: usually for vol/vomms only. Ask Directsupport for help locating a suitable fund. Try FunderFinder software. Ask your local CVS.

Y16